

# Manual for Micro-Manager with digital system 30DV50



## Content

1	Installation.....	3
2	Hardware configuration .....	3
3	Edit configuration file in text editor .....	9
4	Create personal settings.....	10
5	Control with plug-ins.....	12

## 1 Installation

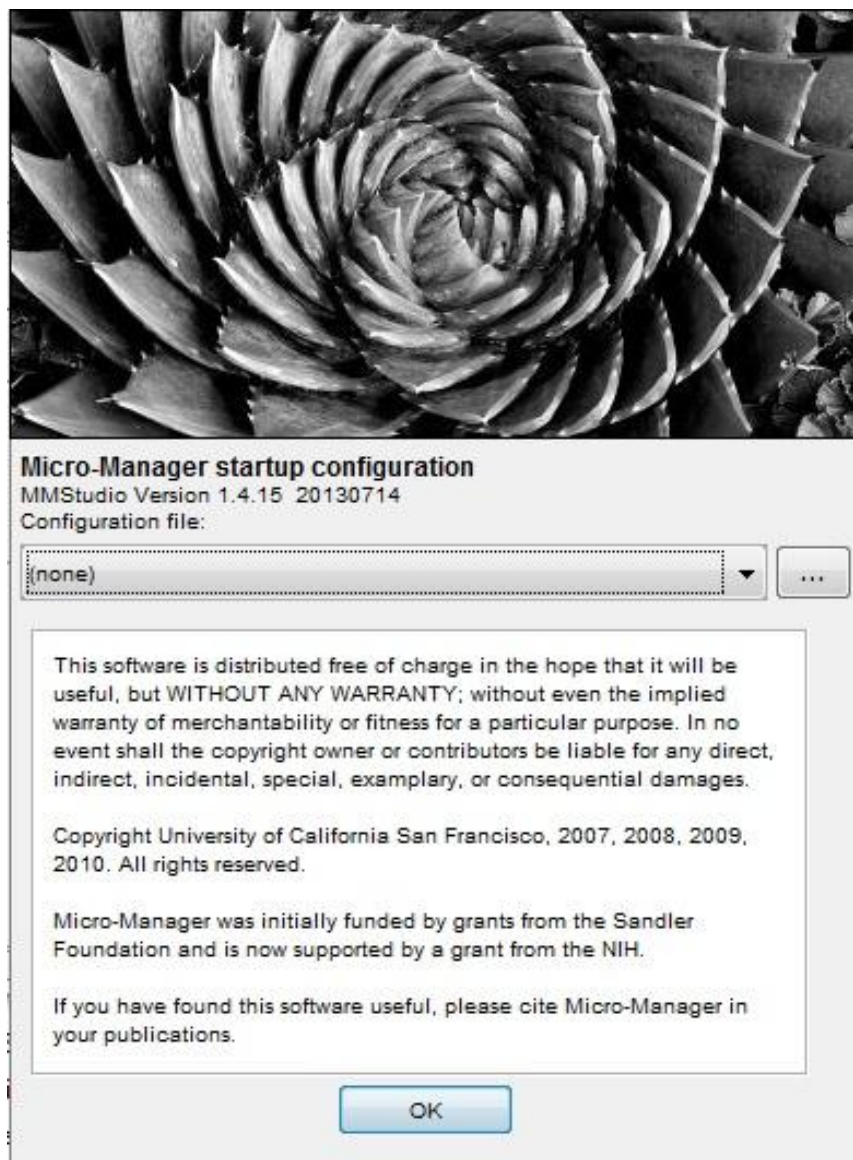
To use the Micro-Manager, a download of the software from the [homepage](#) is required. In this download-package are all needed libraries of the 30DV50 included. Please follow the instructions to install it.

If an older version (before 1.4.15) of Micro-Manager is installed, a download of the library of the digital system from [piezosystem jena](#) is required.

Afterwards the file „mmgr\_dal\_Piezosystem\_30DV50.dll“ must be extracted in the main directory of the program. Now you are able to access in program.

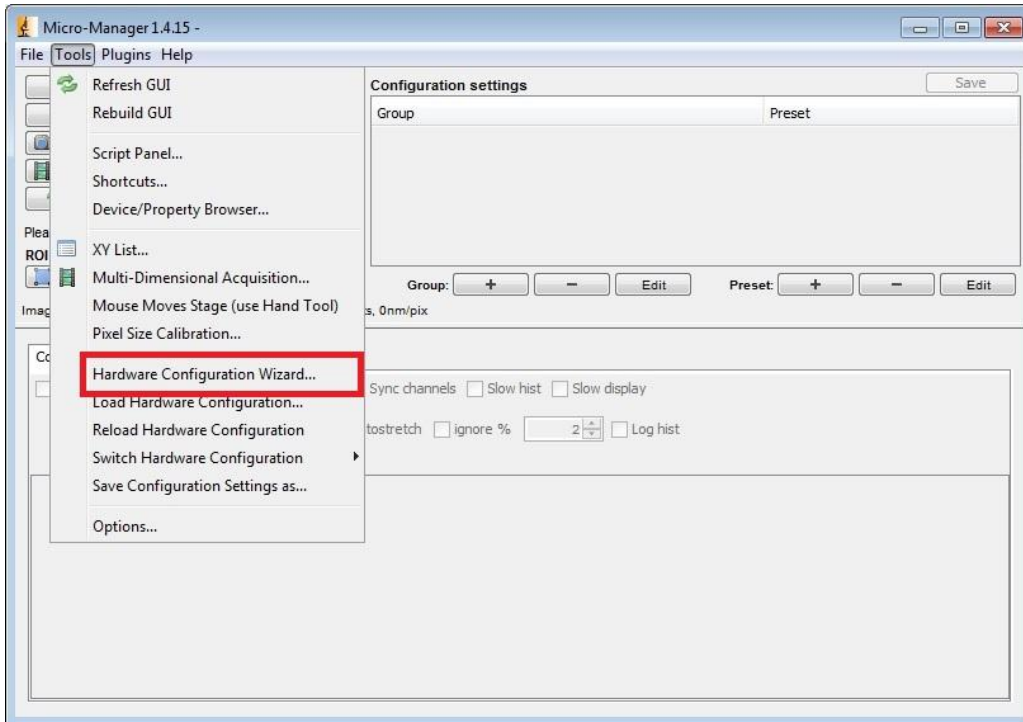
## 2 Hardware configuration

The Micro-Manager should be started without configuration („none“). Close the Window with “OK”.

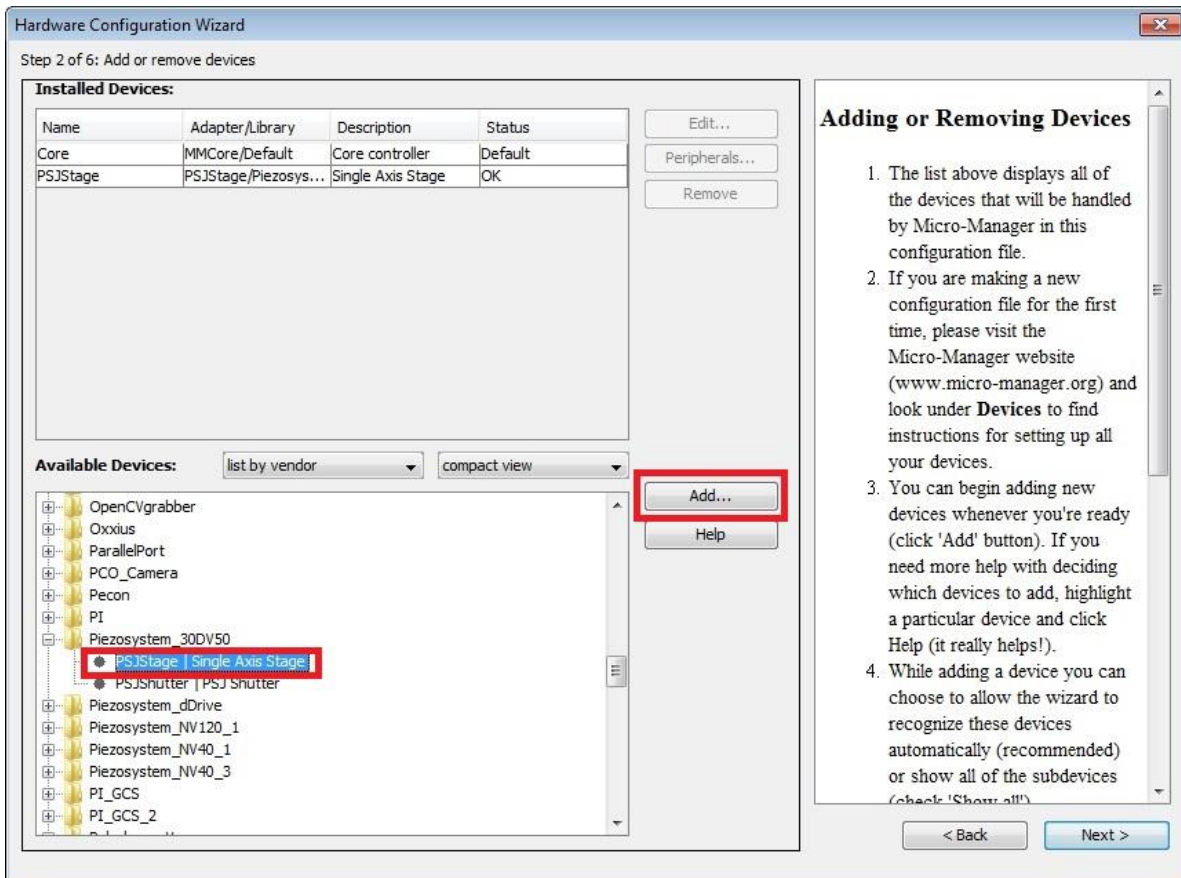


To use the 30DV50, a configuration file must be created. It must be switched on.

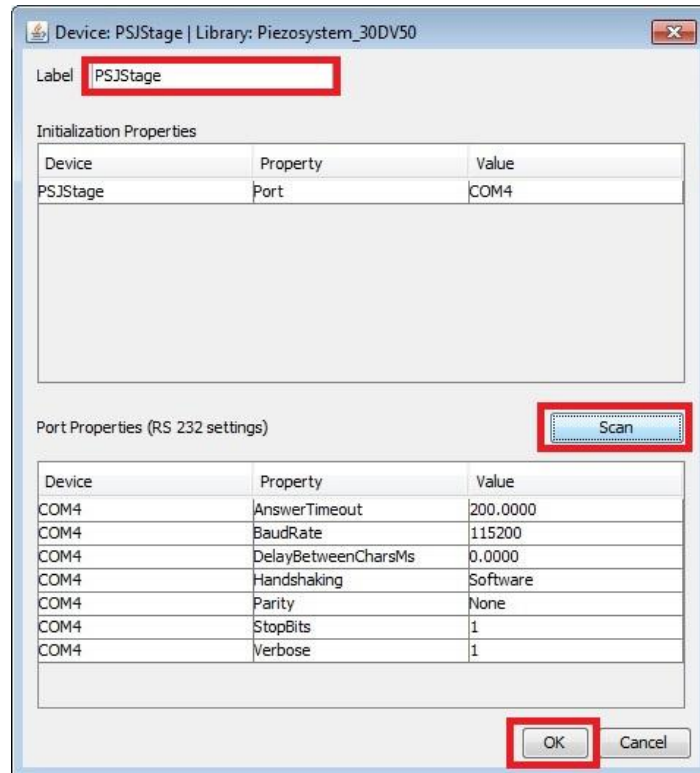
For configuration please click in Menu **Tools**→**Hardware Configuration Wizard**.



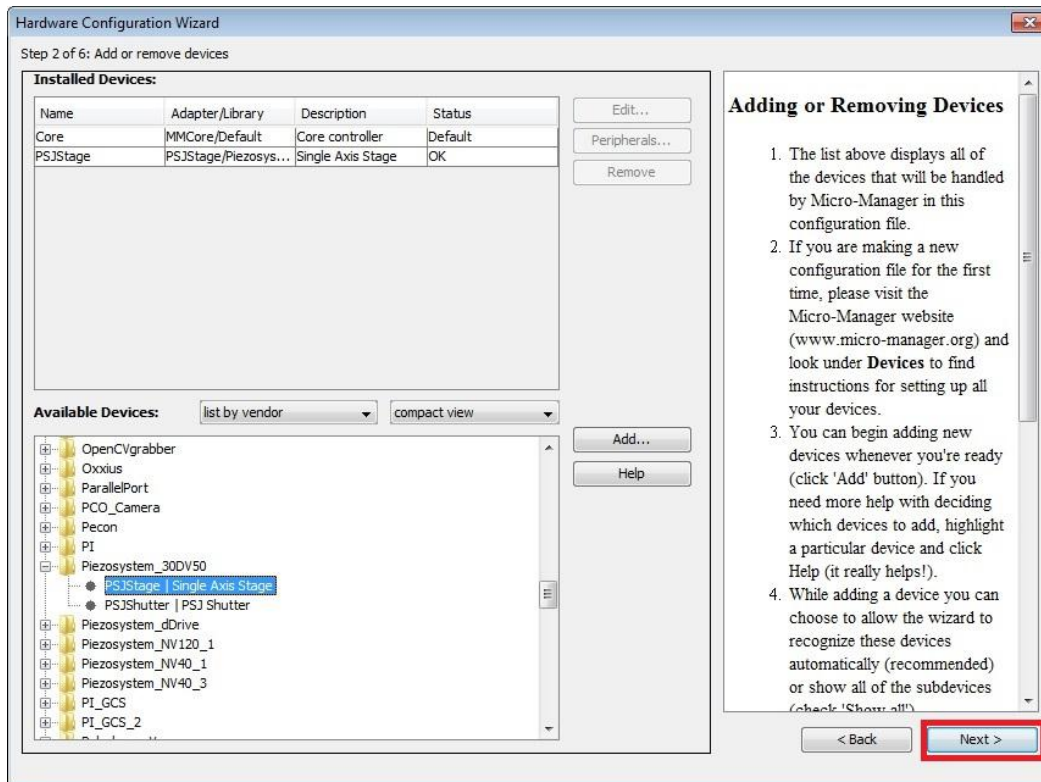
A new window will open. Go to the second step with Button „Next“ and look for 30DV50. Add „PSJStage | Single Axis Stage“ to the list with a double click or push button „Add...“.



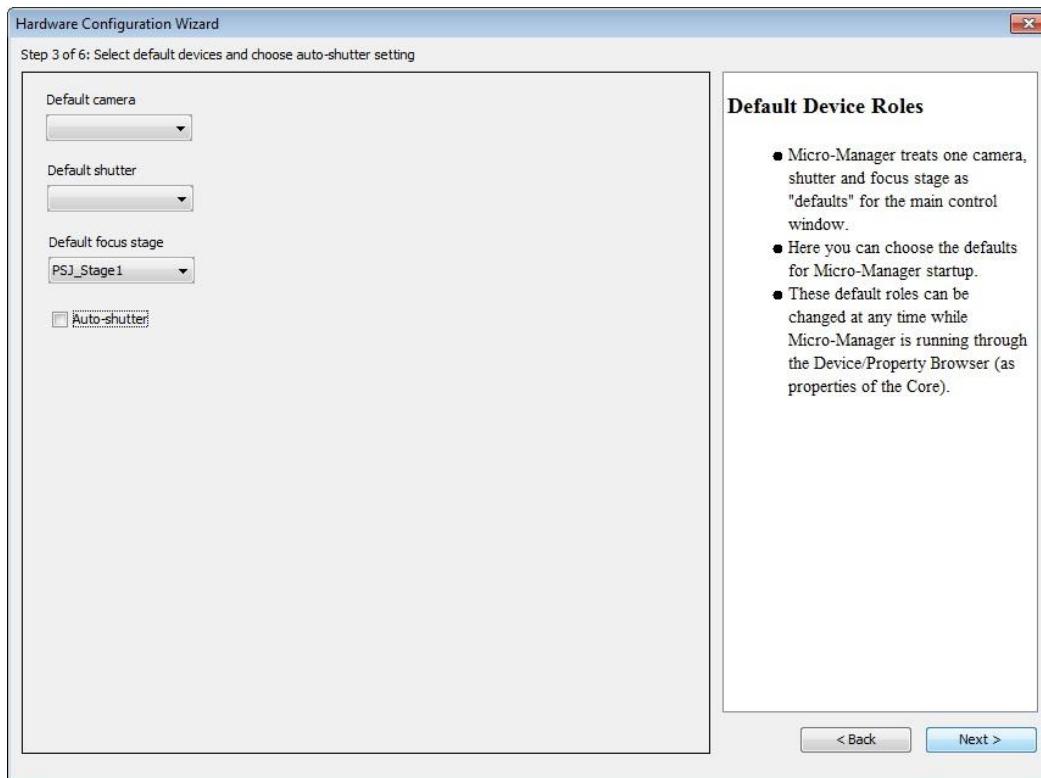
Now a new window is opening for the port setting. Click on the button „Scan“ and let the program search the device. At “Label” you could give the device an own name. Accept the settings with "OK".



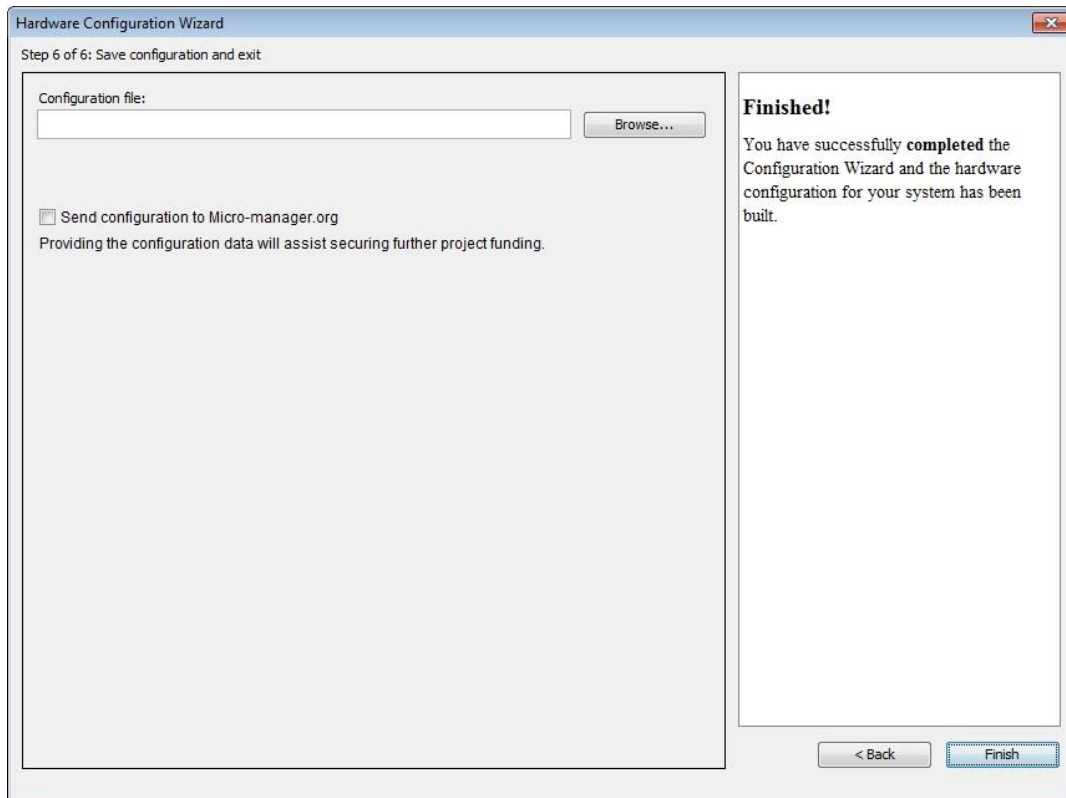
You will return to the configuration window. Accept by button „Next >“.



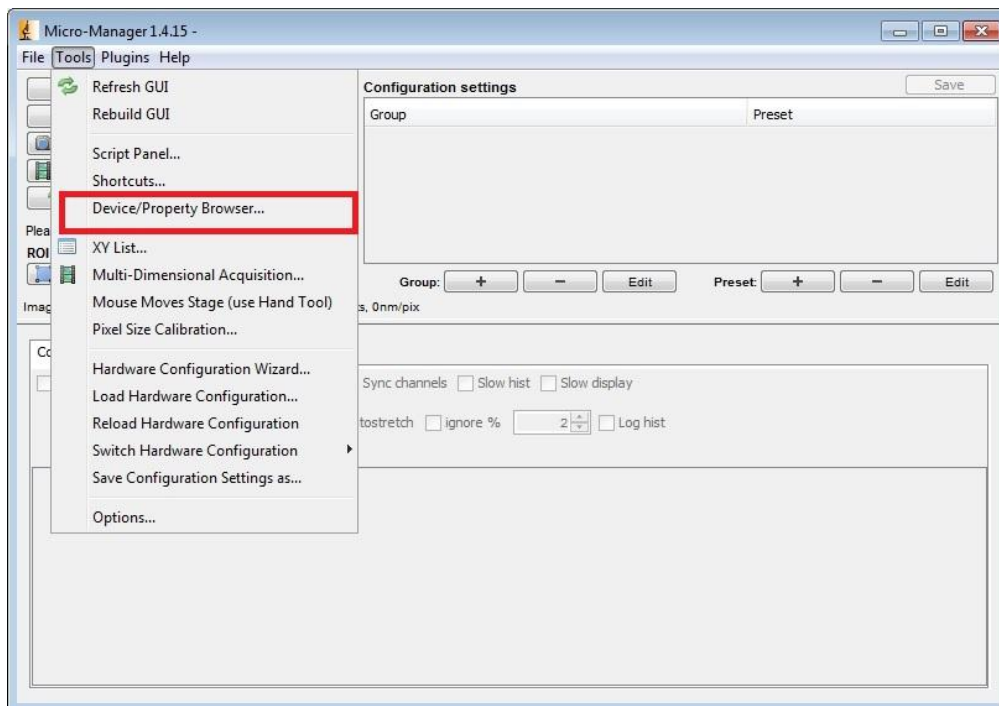
In the subsequent window you could choose a default device. It is possible to change this later again.

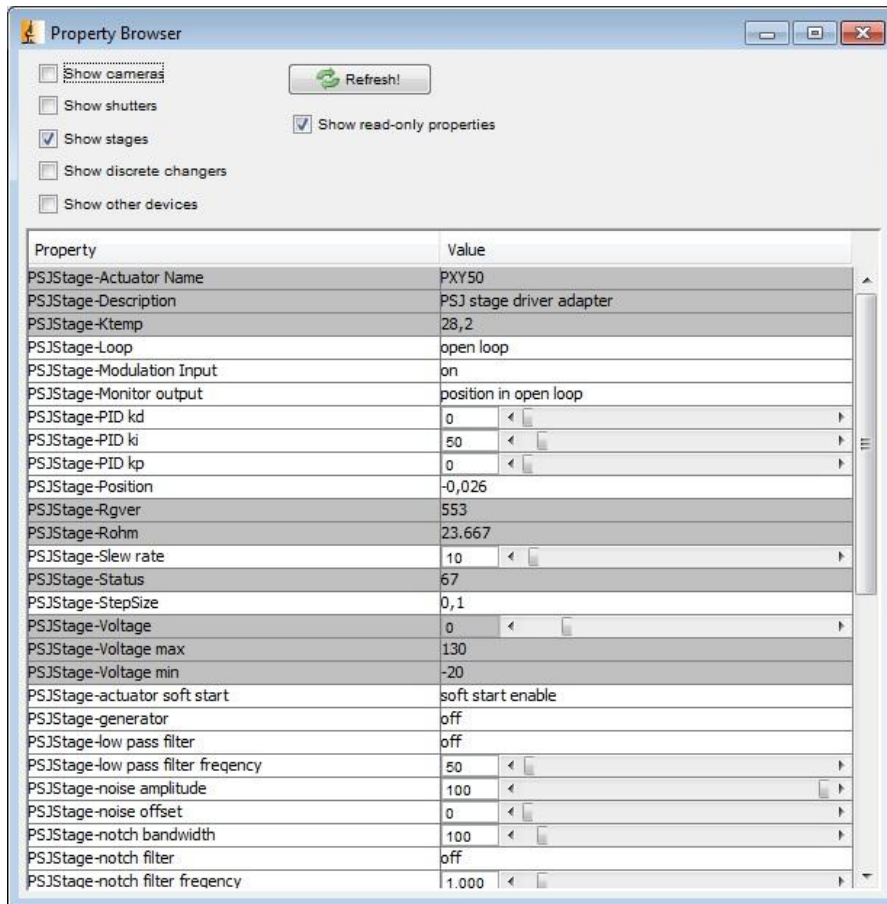


Skip step 4 and 5 with "Next" and save the configuration in a file. This can be load in the next program start. Close the Wizard with „Finish“.



After the successful configuration the 30DV50 can be loaded and handled by the “Property Browser”. It is located at **Tools→Device/Property Browser**





The settings are sorted alphabetically. The grey filled fields can only be read and are for information.

### 3 Edit configuration file in text editor

The configuration file can be edited with any text editor. The following points can be changed:

- label
- channel of device
- port number

Here is an example for a simple configuration.

```
# Reset
Property,Core,Initialize,0

# Devices
Device,COM4,SerialManager,COM4
Device,PSJStage,Piezosystem_30DV50,PSJStage

# Pre-init settings for devices
Property,PSJStage,Port,COM4

# Pre-init settings for COM ports
Property,COM4,AnswerTimeout,200.0000
Property,COM4,BaudRate,115200
Property,COM4,DelayBetweenCharsMs,0.0000
Property,COM4,Handshaking,Software
Property,COM4,Parity,None
Property,COM4,StopBits,1
Property,COM4,Verbose,1

# Hub (parent) references

# Initialize
Property,Core,Initialize,1

# Delays

# Roles
Property,Core,Focus,PSJStage
Property,Core,AutoShutter,1

# Camera-synchronized devices

# Labels

# Configuration presets
# Group: Channel

# Group: System
# Preset: Startup

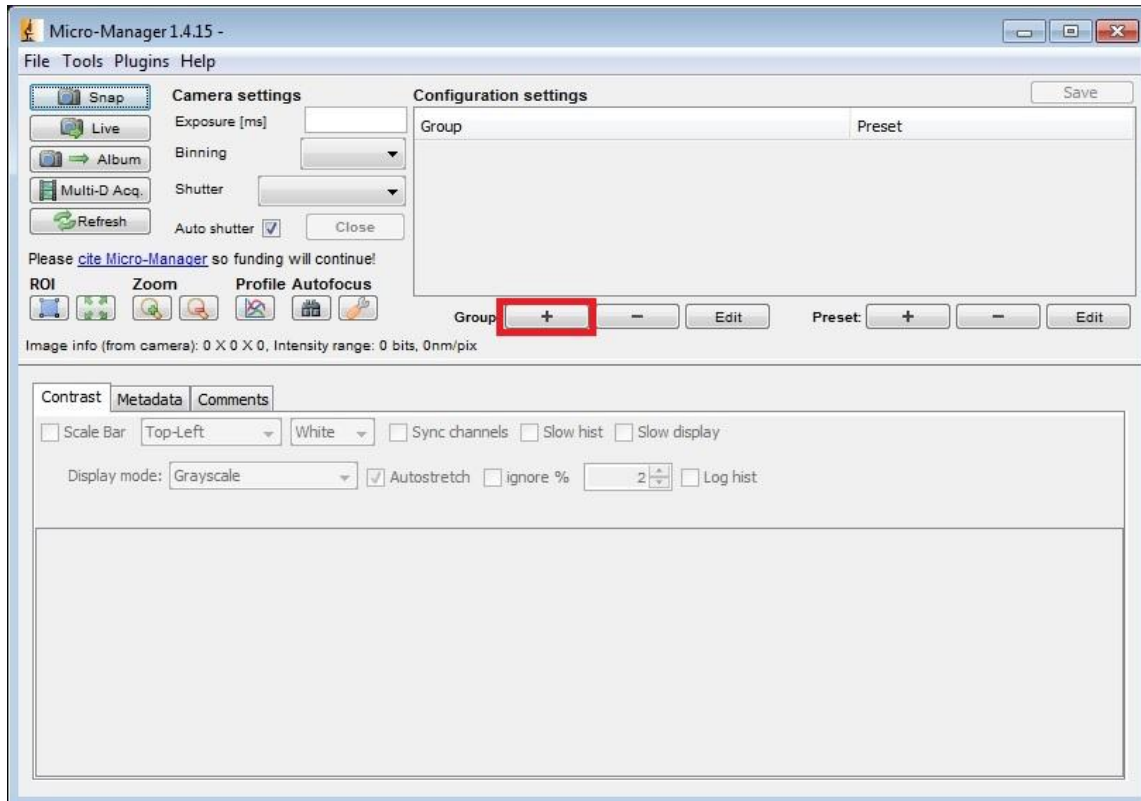
# PixelSize settings
```

Please ensure that the name is only used once and don't use a comma in the name.

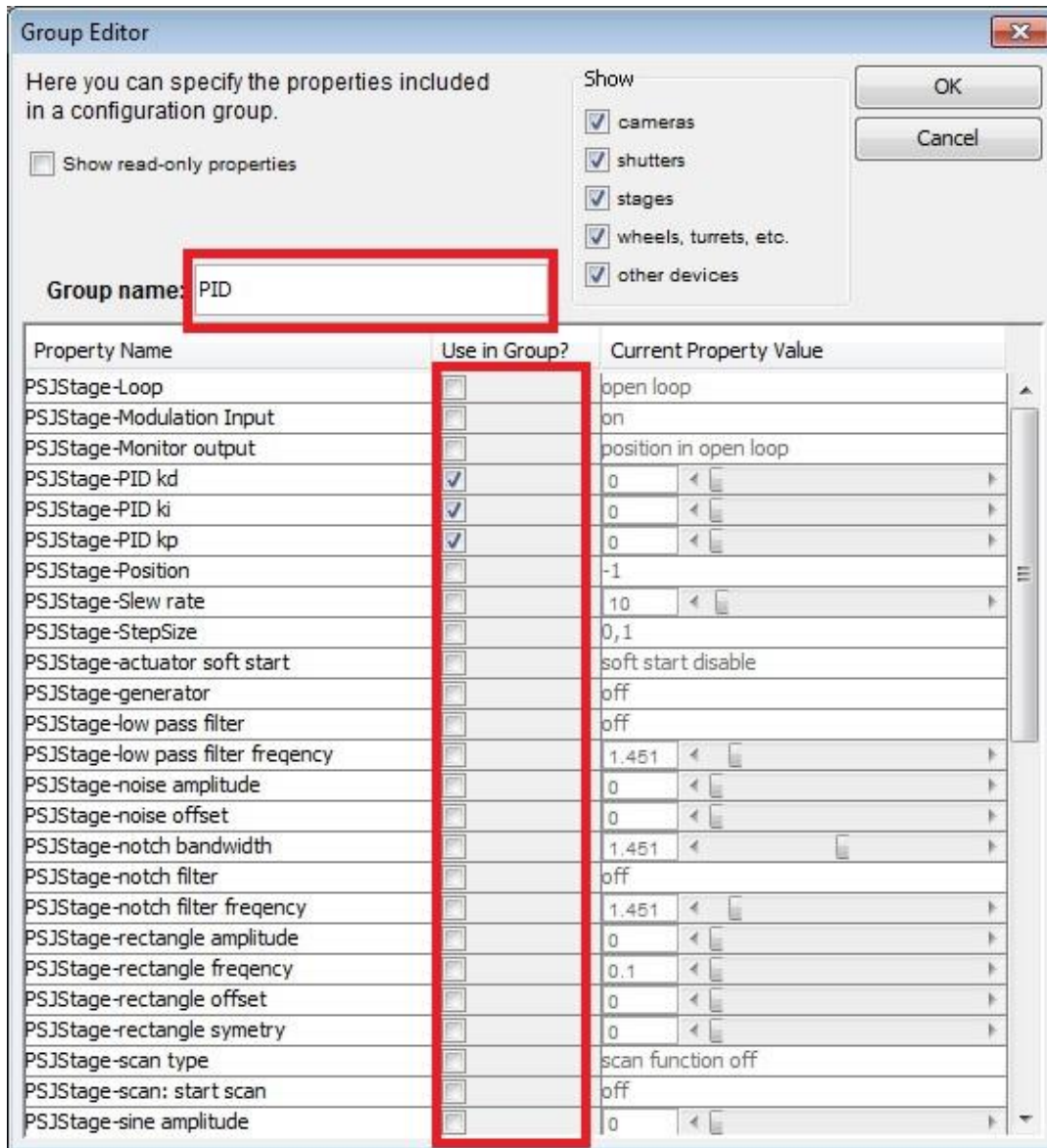
## 4 Create personal settings

Settings should be done in „Configuration settings“. The Property Browser is very slow and should only give an overview. Personal settings are stored in the configuration file, which was created earlier.

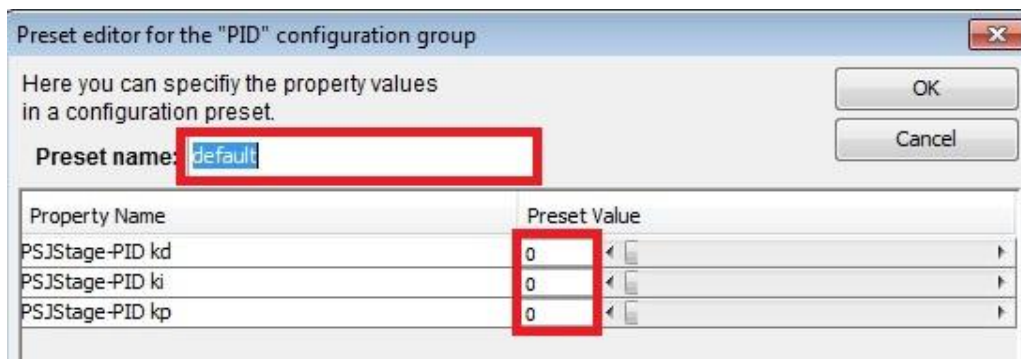
First create a group for setting. Push the button „+“ at „Group“.



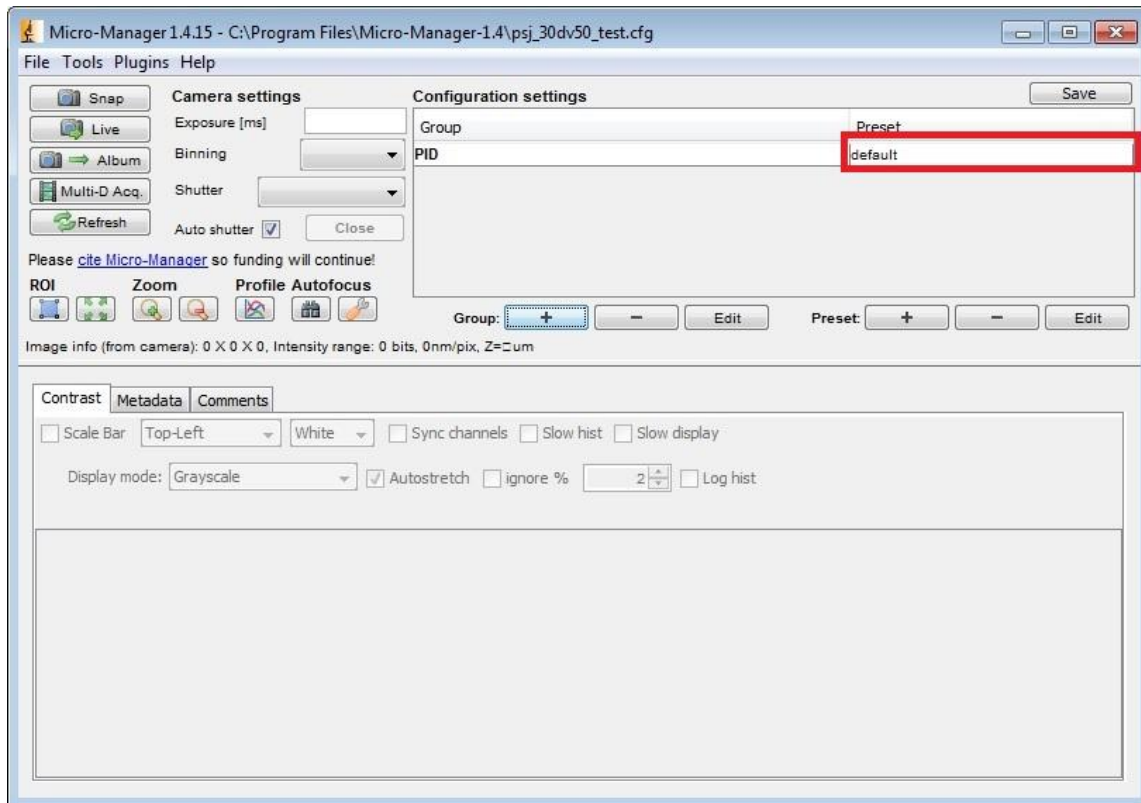
In the "Group Editor" a name for a group can be chosen and the properties selected. Accept with „OK“.



In the next window the settings must be named and the values set.

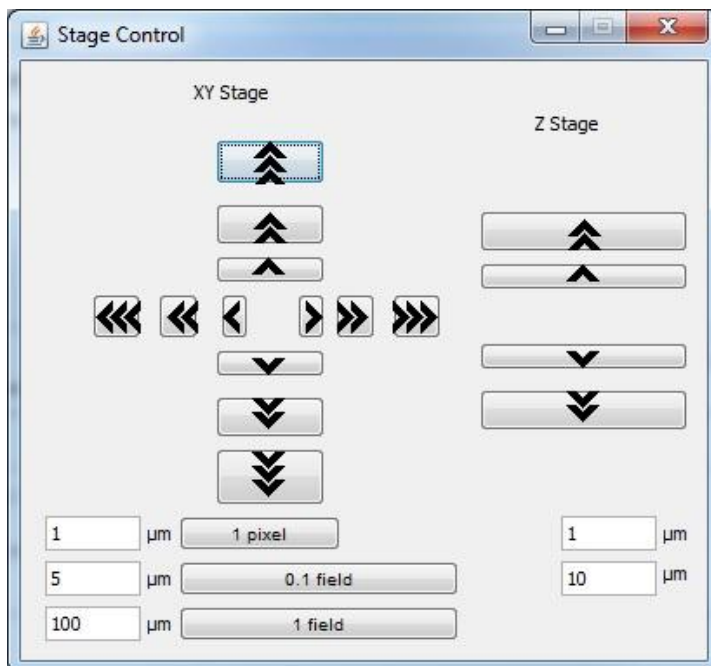


The settings can now be transmitted to 30DV50 in the main window.



## 5 Control with plug-ins

The position can also be controlled by the plug-in „Stage Control“. For this a XY Stage and a Stage for the Z-axis is needed.



It is possible to write own plug-ins in Java or create own GUIs with Netbean.